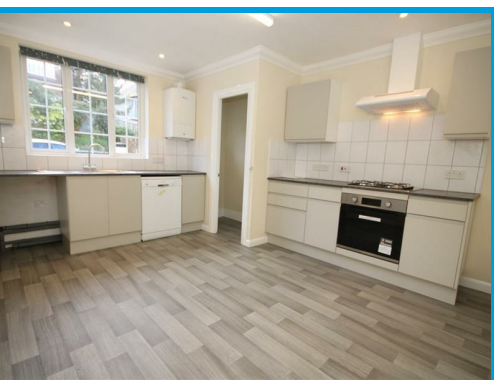




Addison Road, Guildford, Surrey GU1 3QG

£2,500 PCM

Positioned in one of Guildford town centres most sought after locations, this three bedroom detached house has been completely refurbished throughout and offers beautifully presented accommodation with an allocated parking space



# Description

Having undergone complete refurbishment throughout, this beautifully presented three bedroom detached house is conveniently positioned within the catchment of top local schools and within walking distance to Guildford High Street.

The property is set back from the road behind a small walled garden and the ground floor accommodation comprises an entrance hall, a large kitchen/ diner, a lounge with views across to Pewley Downs and a bathroom with shower.

The first floor boasts a large master bedroom, a further double bedroom with views across Charlottesville and a third bedroom.

The lower ground floor features a fully sound insulated room, ideal as a home office or studio.

The property further features an allocated parking space and a private courtyard.

